

MULTILAYER COMMON MODE FILTER

片式共模滤波器



PMCM SERIES



深圳嘉嵘伟业电子有限公司

SHENZHEN JIARONG WEIYE ELECTRONICS CO., LTD.

Tel: 0755-2917 5978

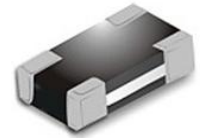
FAX: 133 7842 9168

Website: www.ransioning.com

E-mail: admin@ransioning.com

Multilayer Common Mode Filter-PMCM Series

片式共模滤波器-PMCM 系列



INTRODUCTION AND CHARACTERISTICS 产品介绍及特性

INTRODUCTION

◆ The PMCM series is effective for common mode noise suppression in differential signal. The multilayer common mode filter coil structure enables noise suppression without damaging the differential signal.

产品介绍

◆ PMCM 系列能有效的抑制差分型号上的高频共模杂讯。片式共模滤波器的结构能确保抑制杂讯而不影响差分主讯号。

CHARACTERISTICS

◆ Monolith structure for high reliability
 ◆ Various differential circuits
 ◆ Perfect shape for mounting with no directionality
 ◆ Excellent solderability and high heat resistance for reflow soldering or wave soldering

特性

◆ 积层独石结构、高可靠性
 ◆ 各式差模电路
 ◆ 无引线结构，适合表面安装
 ◆ 良好的焊接性，适合于回流焊或波峰焊

APPLICATIONS

◆ Mother board, tablet PC, notebook, desktop computers and peripheral equipment
 ◆ Differential interfaces of Blu-ray DVD recorder, DSC, DVC, LCD Television
 ◆ Mobile phone, smart phone, PHD

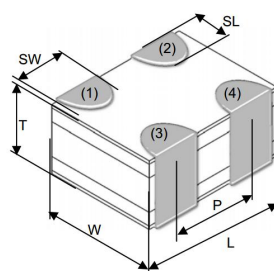
应用产品

◆ 主机板，平板电脑，笔记型，桌上型电脑及其周边设备
 ◆ 蓝光录放影机，数位相机，液晶电视机的差模电路
 ◆ 行动电话，智能手机，个人导航设备

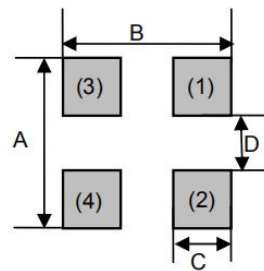
PRODUCT IDENTIFICATION 产品型号

PMCM 2012 F 900 T 2L
 ① ② ③ ④ ⑤ ⑥

①Product Series Code 产品系列码	PMCM	Multilayer Common Mode Filter 片式共模滤波器
②Size Code 尺寸码	2012	长×宽 (L×W) (mm) 2.0×1.2
③Material Code 材质代号	F	材质代码
④Nominal Impedance 阻抗	900	90 Ω
	121	120 Ω
⑤Packing 包装形式	T	Tape and Reel 编带
⑥Number of Lines 引线数	2L	2 线

SHAPE AND DIMENSIONS 外观尺寸
RECOMMENDED LAND PATTERN 推荐的焊盘尺寸


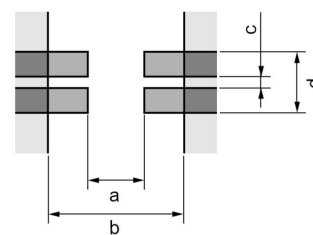
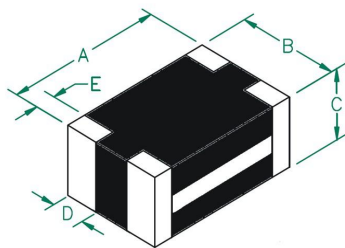
Land Pattern



Unit:mm

SIZE	L	W	T	SL	SW	P	A	B	C	D
0806	0.85±0.05	0.65±0.05	0.40±0.05	0.20+0.05/-0.10	0.27±0.05	0.50±0.05	0.9	0.8	0.3	0.3

Land Pattern

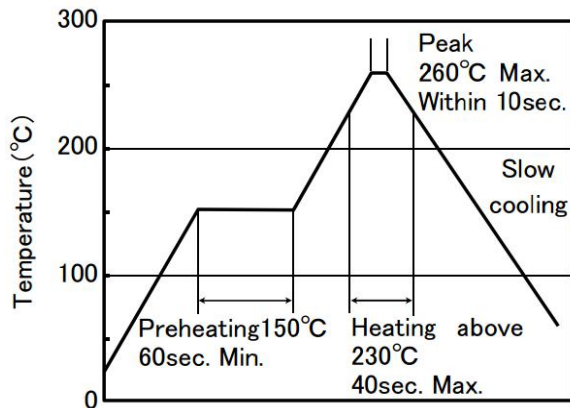


Unit:mm

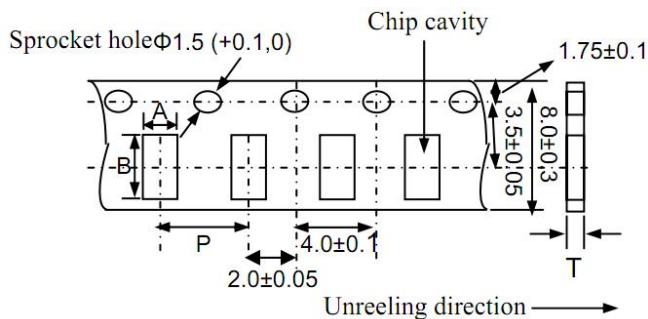
SIZE	A	B	C	D	E	a	b	c	d
1210(0504)	1.25±0.1	1.00±0.1	0.82±0.1	0.30±0.1	0.25±0.1	0.55	1.95	0.2	0.8
2012(0805)	2.00±0.2	1.25±0.2	0.90±0.2	0.30±0.2	0.40±0.2	1.1	2.6	0.4	1.4
3216(1206)	3.2±0.2	1.6±0.2	1.1±0.2	0.7±0.2	0.3±0.2	1.4	2.8	0.6	2.6

STORAGE AND OPERATING CONDITIONS 储存及操作条件

Operating Temperature Range	-40°C~+85 °C
Storage Temperature and Humidity Range	-10°C~+40°C, 70%RH max.

RECOMMENDED SOLDERING CONDITION 建议焊锡方式
REFLOW SOLDERING 回流焊


- ① Ceramic chip components should be preheated to within 100 to 130°C of the soldering.
- ② Assured to be reflow soldering for 2 times.

PACKING STANDARD 包装标准
◆ Taping Dimensions
Paper tape (8mm wide)


Type	Chip Thickness	A	B	P	T max.	Quantity (pcs/reel)
						$\phi 178$ mm Reel
PMCM0806	0.40	0.80	1.00	2.0	0.55	10000
PMCM2012	0.90	1.50	2.30	4.0	1.10	4000

SPECIFICATIONS 规格特性
PMCM 0806 TYPE

Part Number 型号	Impedance At 100MHz 阻抗 Z	Insulation resistance 绝缘阻抗 IR	DC Resistance 直流电阻 RDC	Rated Current 额定电流 Ir	Thickness 厚度
Units 单位	$\Omega \pm 25\%$	Ω (Min.)	Ω (Max.)	mA (Max.)	mm
PMCM0806F120T2L	12	100M	2.5	130	0.40±0.05
PMCM0806F350T2L	35	100M	3.0	100	0.40±0.05
PMCM0806F470T2L	47	100M	3.5	100	0.40±0.05
PMCM0806F900T2L	90	100M	4	100	0.40±0.05

PMCM 1210(0504) TYPE

Part Number 型号	Impedance At 100MHz 阻抗 Z	Insulation resistance 绝缘阻抗 IR	DC Resistance 直流电阻 RDC	Rated Current 额定电流 Ir	Thickness 厚度
Units 单位	$\Omega \pm 25\%$	Ω (Min.)	Ω (Max.)	mA (Max.)	mm
PMCM1210F350T2L	35	100M	0.9	170	0.82±0.1
PMCM1210F670T2L	67	100M	1.2	150	0.82±0.1
PMCM1210F900T2L	90	100M	1.4	150	0.82±0.1

PMCM 2012(0805) TYPE

Part Number 型号	Impedance At 100MHz 阻抗 Z	Insulation resistance 绝缘阻抗 IR	DC Resistance 直流电阻 RDC	Rated Current 额定电流 Ir	Thickness 厚度
Units 单位	$\Omega \pm 25\%$	Ω (Min.)	Ω (Max.)	mA (Max.)	mm
PMCM2012F670T2L	67	100M	0.4	400	0.90±0.2
PMCM2012F900T2L	90	100M	0.7	400	0.90±0.2
PMCM2012F121T2L	120	100M	0.7	400	0.90±0.2

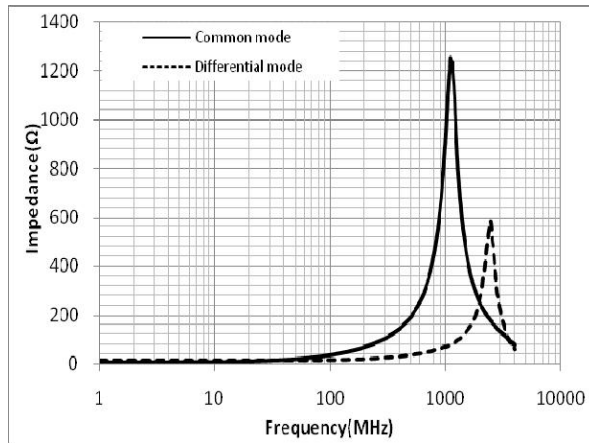
PMCM 3216(1206) TYPE

Part Number 型号	Impedance At 100MHz 阻抗 Z	Insulation resistance 绝缘阻抗 IR	DC Resistance 直流电阻 RDC	Rated Current 额定电流 Ir	Thickness 厚度
Units 单位	$\Omega \pm 25\%$	Ω (Min.)	Ω (Max.)	mA (Max.)	mm
PMCM3216F900T2L	90	200M	0.5	500	1.1±0.2
PMCM3216F121T2L	120	200M	0.5	500	1.1±0.2
PMCM3216F181T2L	180	200M	0.6	400	1.1±0.2
PMCM3216F221T2L	220	200M	0.6	400	1.1±0.2

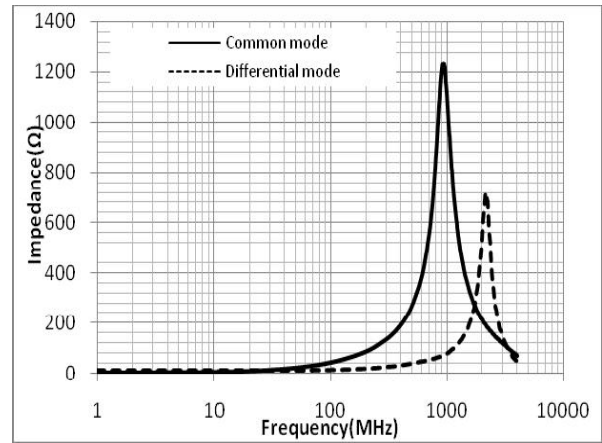
TYPICAL ELECTRICAL CHARACTERISTICS 典型电气特性

COMMON MODE & DIFFERENTIAL MODE vs. FREQUENCY

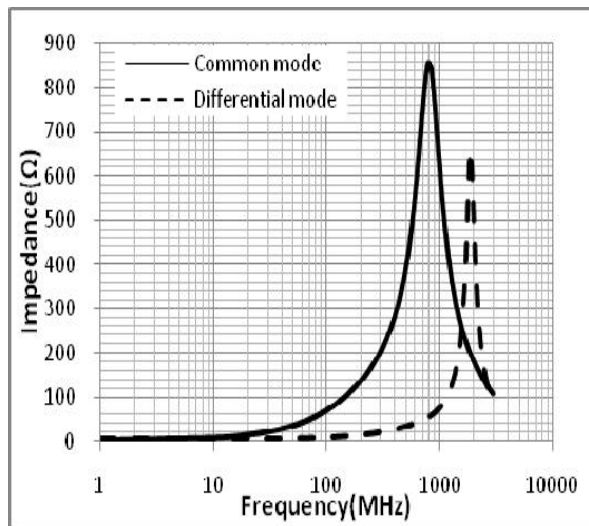
PMCM0806F350T2L



PMCM0806F470T2L



PMCM0806F900T2L



PMCM2012F900T2L

